

FastCheck MT

Fully Fiber Endface Inspector



Automatic
Measurement



Automatic
Focusing



Automatic
Centering

With the upsurge of artificial intelligence, digital reality, etc., the demand for endface inspection requirements such as 800G, 1.6T optical transceivers, MPO connectors and high-density connectors globally, and the efficiency of production detection has continued to face challenges. In order to quickly improve the efficiency of the production fiber endface inspection, Dimension launched Fastcheck MT Fully Fiber Endface Inspector. For optical transceivers and connectors, the field of view is large enough to inspect all the fibers of the Endface at one time. It is more convenient to use for automation scenario due to automatic focusing, automatic finding center, and automatic Pass/Fail analysis can quickly improve the test efficiency. At the same time, it stores pictures and reports to facilitate production traceability.

Main Features

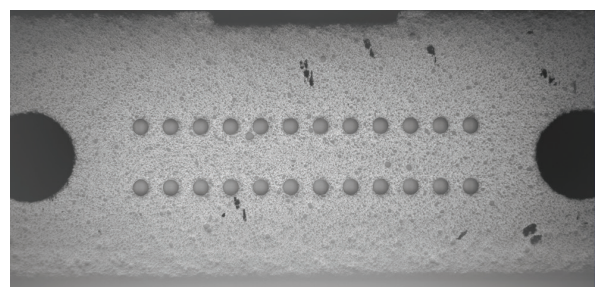
- Fully Fiber Endface Pass/Fail inspection at one time.
- Full automatic detection, high efficiency, measurement speed for about 3 seconds.
- Compatible with a variety of MT connector types and transceivers inspection.
- Software interface is user-friendly.

Main Application

- 400G/800G/1.6T and other multifiber transceiver manufacturing.
- MT/MPO/MMC/SN-MT or other multifiber connector manufacturing inspection.

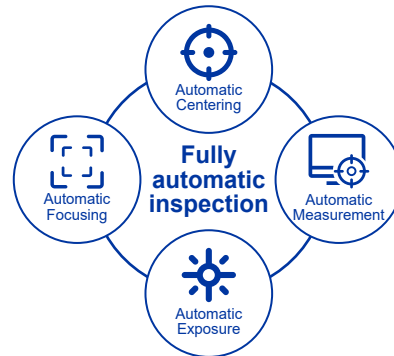
Fully Fiber Endface detection at one time

Fastcheck MT, it's hardware adopts a large field of view camera and optical path system. Thanks to the large field of view, it can realize a fast inspection on multifiber at a time which effectively improves the production efficiency.



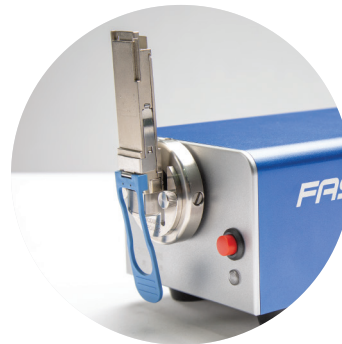
Automatic Pass/Fail analysis, high efficiency

Automatic focusing, automatic finding center, automatic exposure, automatic inspection, reducing manual operations, and reducing dependence on operators. The test speed is about 3s.



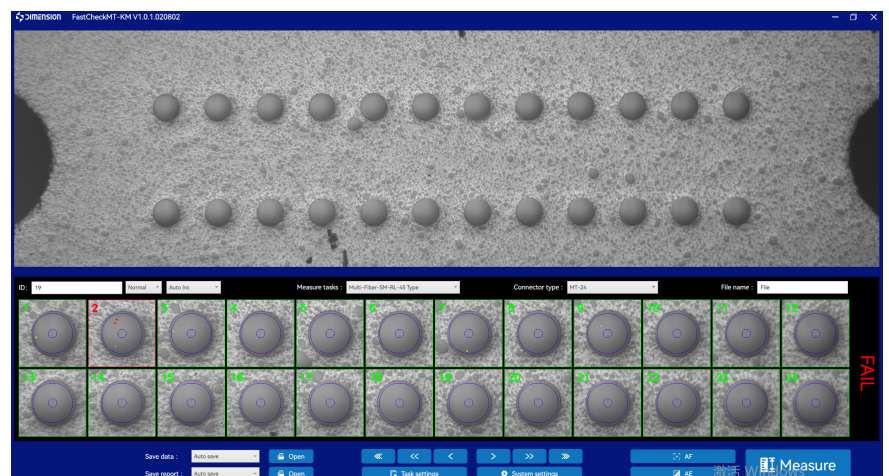
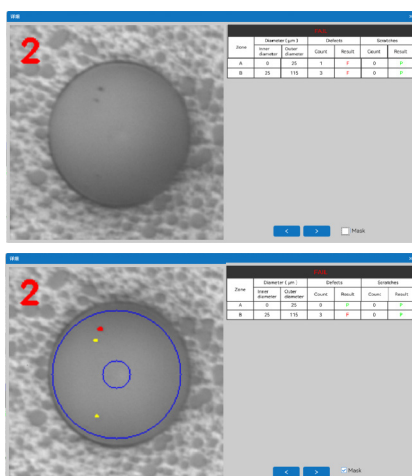
Compatible with a variety of MT connector types and transceivers inspection

A variety of modules such as 400G/800G/1.6T and MT/MPO/MMC/SN-MT and other connectors are compatible.



Software interface is user-friendly

PC Software interface is user-friendly, complete, easy-to-use, the real-time images and Pass/Fail analysis results are clearly visible.



Parameter performance

Type	Parameter
Field of view	5.2 mmX2.5 mm
Defect size detection	0.8um
Effective resolution	1.6um
Magnification	0.95 um/px or 200x
Focus	auto
Measurement time	2.1 sec for MT12. 2.5 sec for MT16 2.6 sec for MT24
Light source	royal blue LED, 465 nm
Camera type	digital, USB3.0
Sensor type	monochrome, 5472 x 3648, 1"CMOS
Live image	19.2 fps full resolution
Power source	DC 24V
Dimensions (L × W × H)	286mm x 101mm x 86mm
Weight	2.7kg
Operating temperature	-10 to +40°C

Related Products



Offsoon Pro



MT Pro



Multifiber IRL Meter



AutoGet MT

Dimension Technology Co.,Ltd

Tel: +86 755-26480850

Email: sales@dimension-tech.com

Web: www.dimension-tech.com